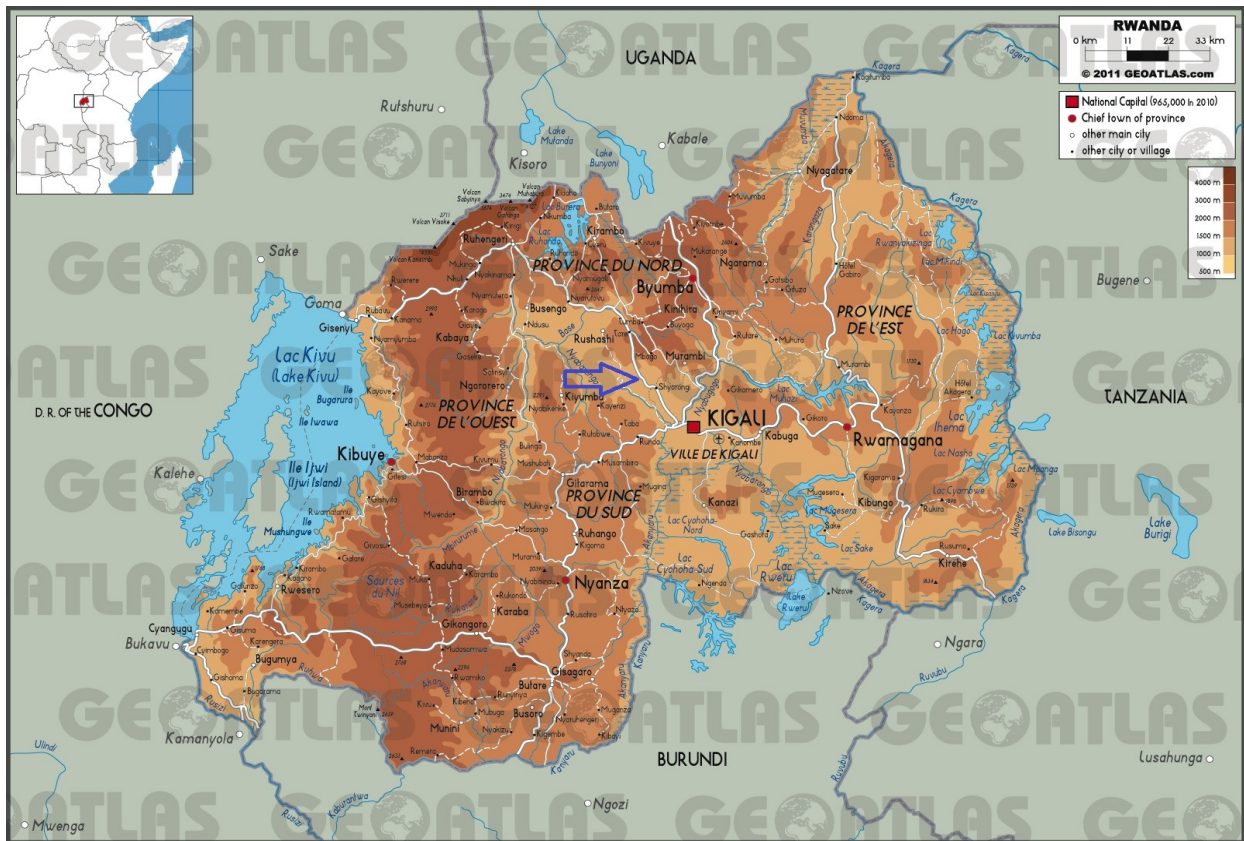




Colline Rusiga South (2171m)
(Tour du Rwanda)



Top of Rusiga



For the presentation of the Tour du Rwanda, see Issue 21, about « Kigaliberg ».

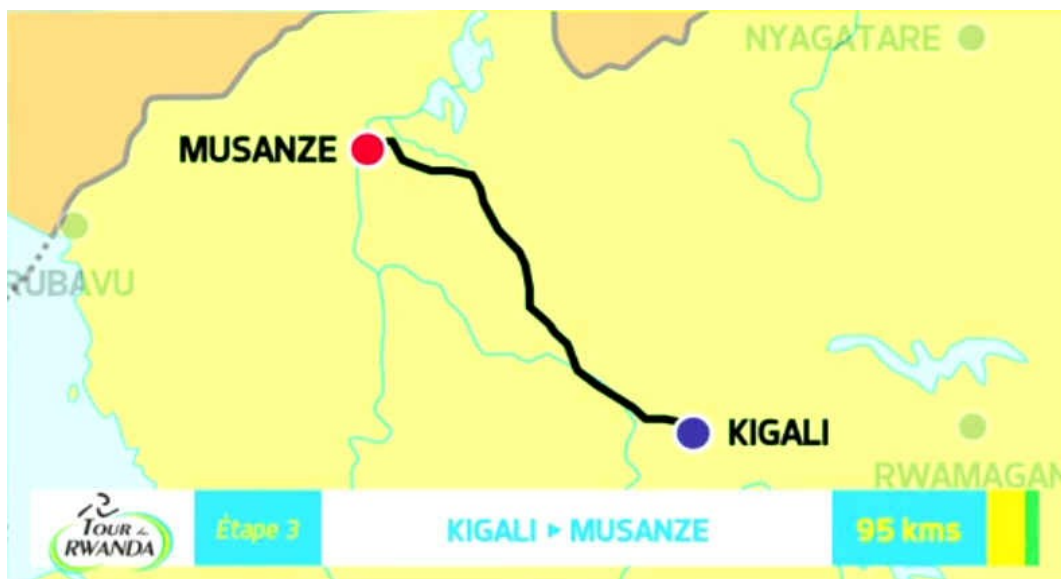
Links :

Official website : <http://www.tourdurwanda.rw/>

Videos :

<http://www.tourdurwanda.rw/Videos/Stage-3-Tour-du-Rwanda-2015-Kigali-Musanze-Igice-cya-I>

<https://www.youtube.com/watch?v=x4ZYdmmINfw>





Portrait

The « Colline Rusiga » lies on the National Road RN4, ridge road above the Nyabugogo River, from Kigali to Musanze. The organizers put two « Kings of the Mountain » in the same long climb. The first in Nyamweru, after 5,9km, and the second at the foot of the « Colline Rusiga » itself, after 22,4km.

Nyamweru deserves its ranking in first category : 6km at 7% average, from 1368 to 1783m, with a 4th km at 9%.

% km : 7,9 6,3 7,0 9,1 7,2 4,0

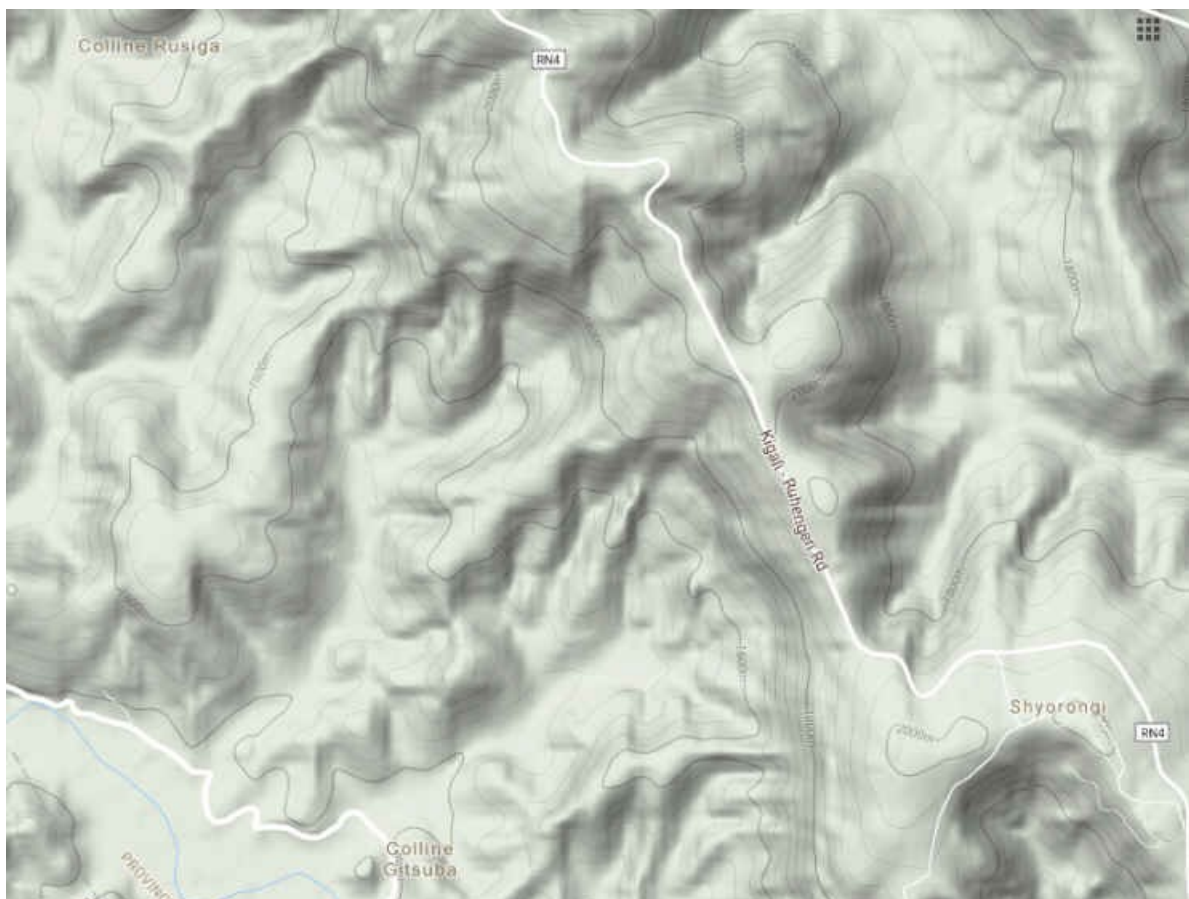




Breakaway in Nyamweru

The profile of the second part is more irregular, typical of a ridge road. 16,5km and a 466m positive elevation gain (2171-1783m) :

-2,9 -0,4 0,2 5,2 3,7 / 6,3 2,7 2,4 -1 1,2
 -3,5 6,4 4,1 6,5 2,9 / 0,9 500m at 8,2





Ridge road

