

Mount Baldy (1964m)

Foot : -117.83795° 34.14702°
Top : -117.62397° 34.26961°



Tour of California

Age doesn't matter. Only the 12th edition in 2017, but a winner list of first choice. Nothing but heavyweights : Landis opened hostilities in 2006 ; then Leipheimer (3x), Rogers, Horner, Gesink, Van Garderen, Wiggins, Sagan and Alaphilippe.

Edition 2017

The value of the winner list speaks volumes about the route. 7 days long : a criterium in Sacramento, an ITT (23km) and more than 12.000m elevation gain in the Californian hinterland, spread over 5 stages and 15 KOM.

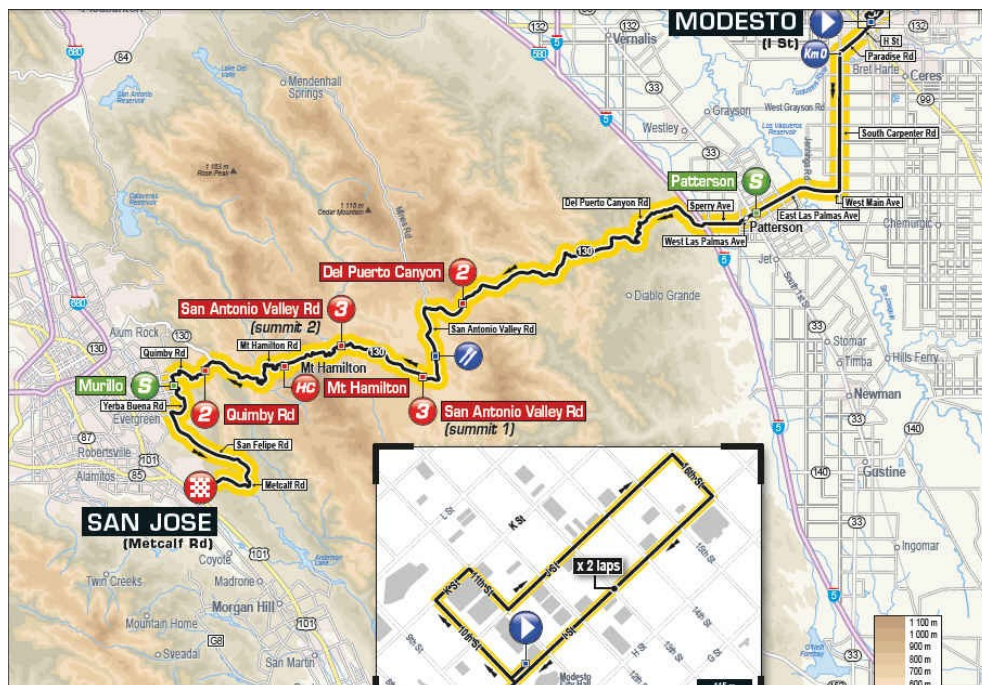
2- Modesto-San Jose (2560m cumulative elevation gain)

3- Pismo Beach-Morro Bay (1675m)

4- Santa Barbara-Santa Clarita (2225m)

5- Ontario-Mt. Baldy (3350m), the queen stage

7- Mountain High-Pasadena (2440m)



2nd stage



4th stage

Tour of California Women's race

The race for women is 4 days long. The first 2 stages will take place around and near the Lake Tahoe, the largest mountain lake in North America, situated at 1900m.



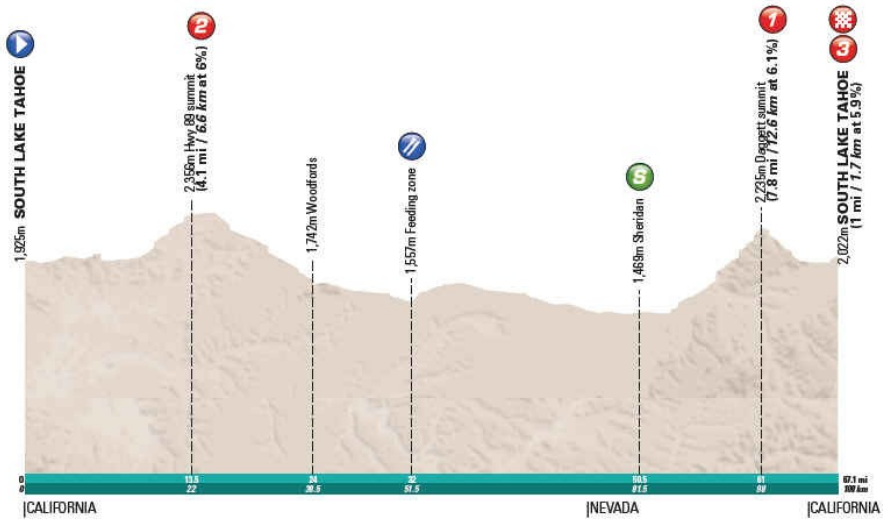
1st stage : Lake Tahoe – 117km – 1525m (cumulative elevation gain)

An important cumulative elevation gain, a remarkable landscape, but no major climb.



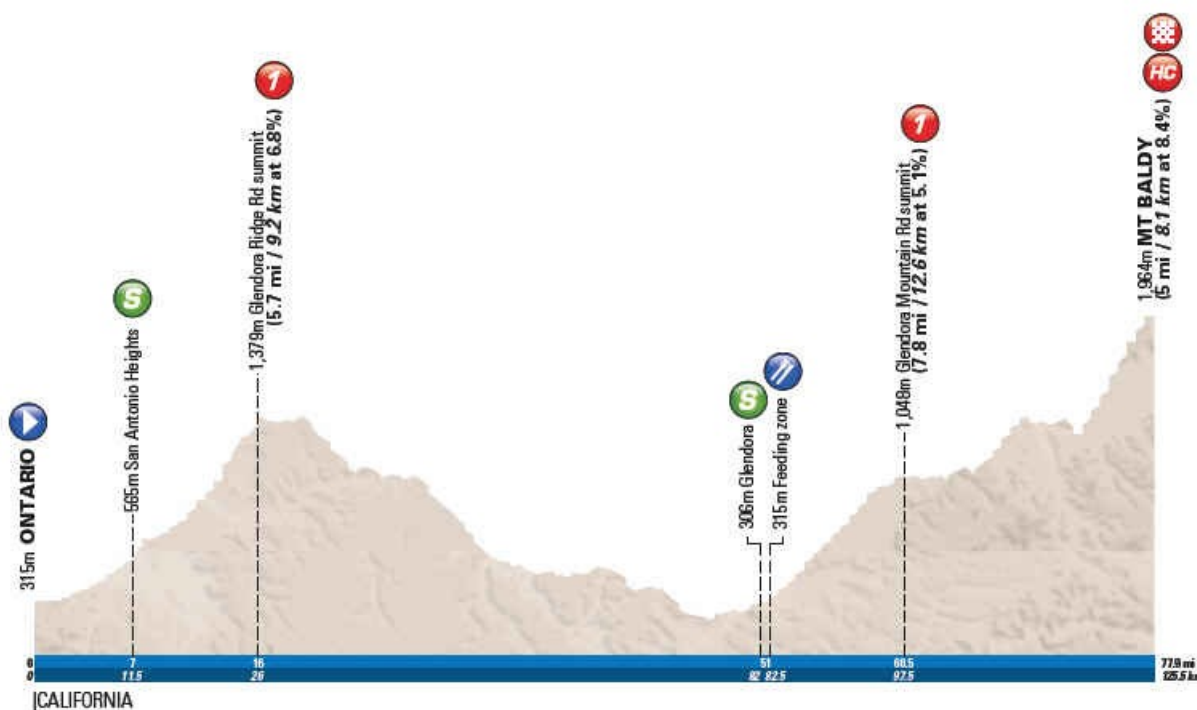
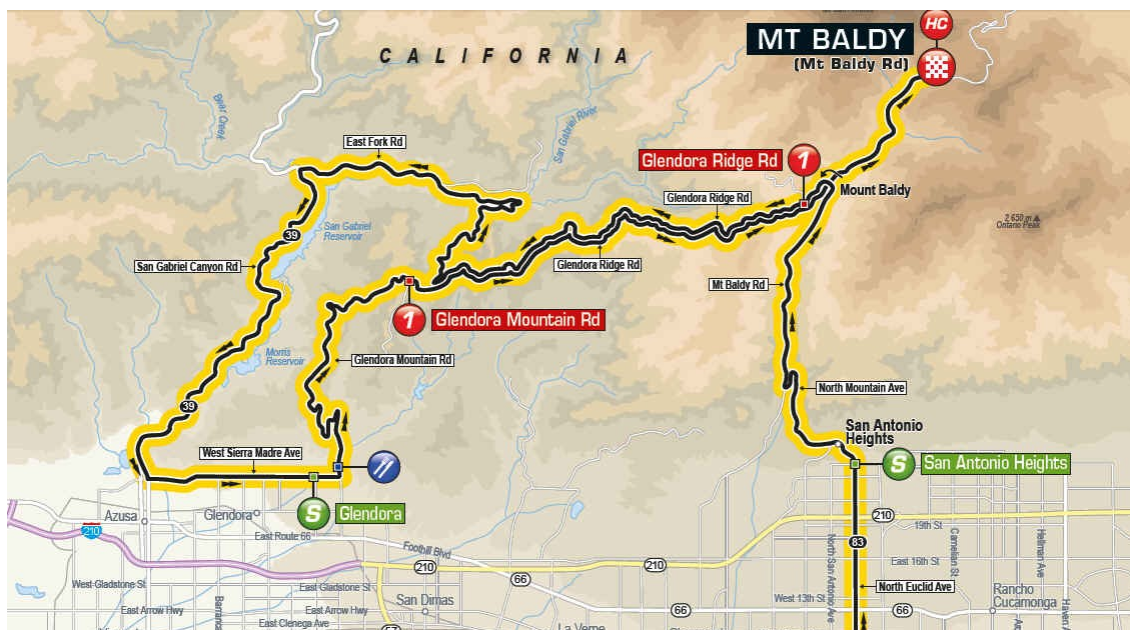
2nd stage : South Lake Tahoe – 108km – 1850m (c.e.g.)

The stage takes place in the south-east of the lake. One big climb : **Daggett** (at 2235m).



5th stage of the men's race : Ontario-Mt Baldy (125km - 3350m cumulative)

Short but very dense stage.



Official website : <http://www.amgentourofcalifornia.com/>

Everything you always wanted to know about Mount Baldy (but were afraid to ask) :

<http://climbingcyclist.com/Hillclimbs/Mt%20Baldy/Mt%20Baldy.html>

Mount Baldy – Portrait

From Glendora, the whole climb stretches out over 43km for a 1655m cumulative e.g. It looks like a 3 steps stairs :

1st step : Horse Canyon Saddle (KOM 1st cat. « Glendora Mountain Road » on the profile and the map below). The foot is in Glendora at 309m ; the pass at 1049m ; the 15km long climb is quite steady around 5% : 4,7 5,9 4,2 5,5 5,8 / 5,6 5,3 5,2 6,0 5,6 / 5,8 5,5 -1,1 6,0 4,1.



Foot in Glendora (Sierra Madre Avenue East)



Top a few hm before the pass



Horse Canyon Saddle

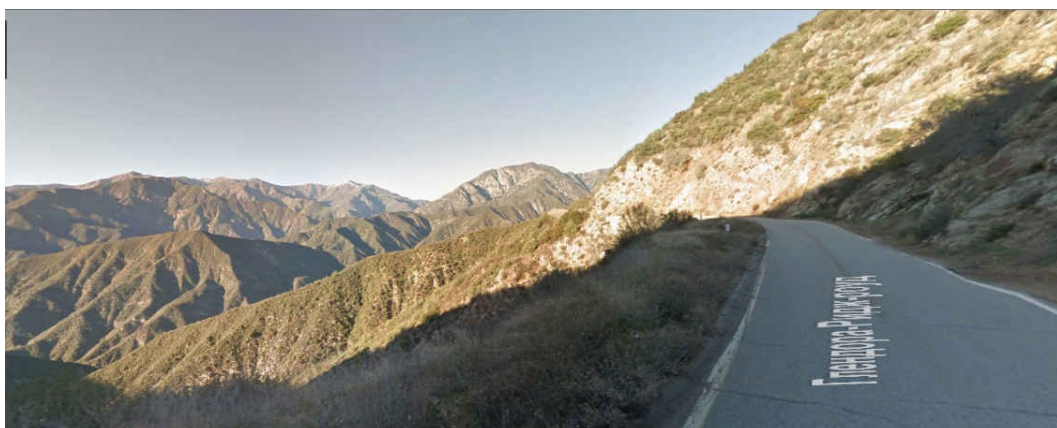
1st landing : from km15 to km23

After the saddle, 8km on the hillside. The elevation gain is almost zero and the downhill sections follow the uphill ones.



Transition on a slighty uphill section

2nd step : from km23 to km28,7 – 355m in 5,7km (7,4 5,9 6,0 5,8 4,6 + 58m in 700m)



Km24

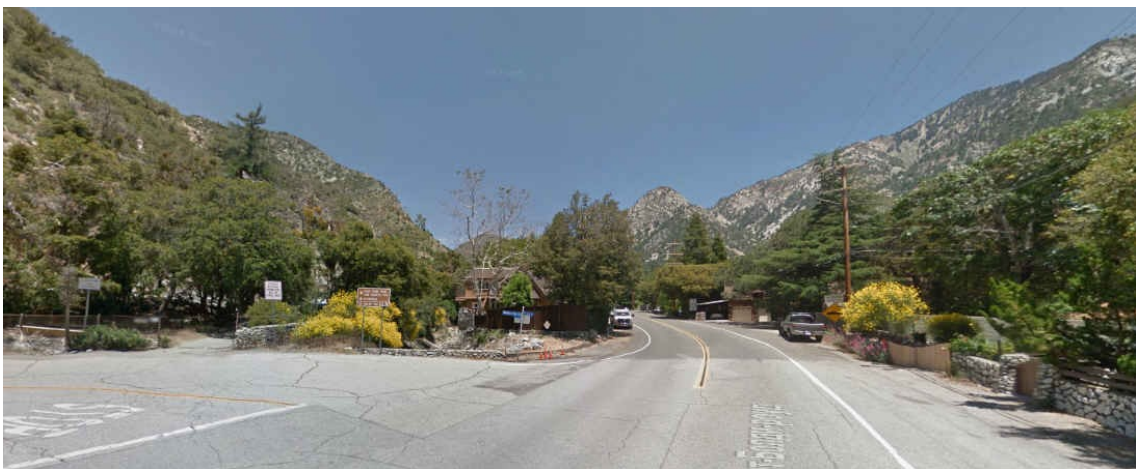


Km28, near the 2nd landing

2nd landing : 6,5km and a slight elevation loss (-95m) to the lower part of Mount Baldy resort (1388-1293m)



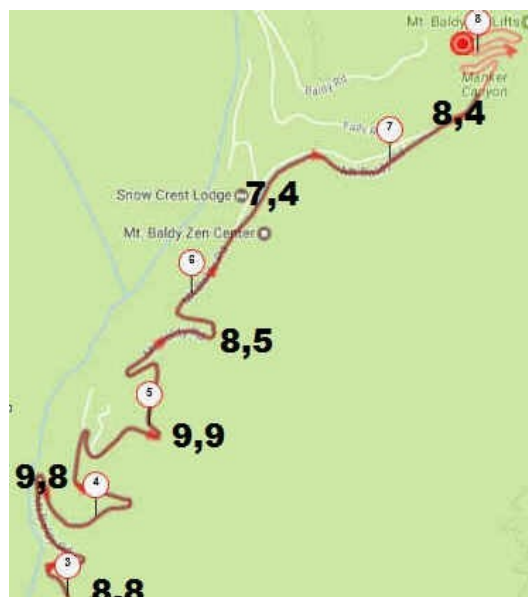
Through the Cow Canyon Saddle (km33,3)



Entrance in Mount Baldy resort (km35) : Gates of Heaven or Hell?

3rd step : the climb of Mounty Baldy itself, up to the ski lifts :

680m in 8,5km : 6,1 8,2 8,8 9,8 9,9 / 8,5 7,4 8,4 + 10m





Km1 Out of the resort



Km2 Ice House Canyon



Km3 Before the hairpins



Km4 hairpin



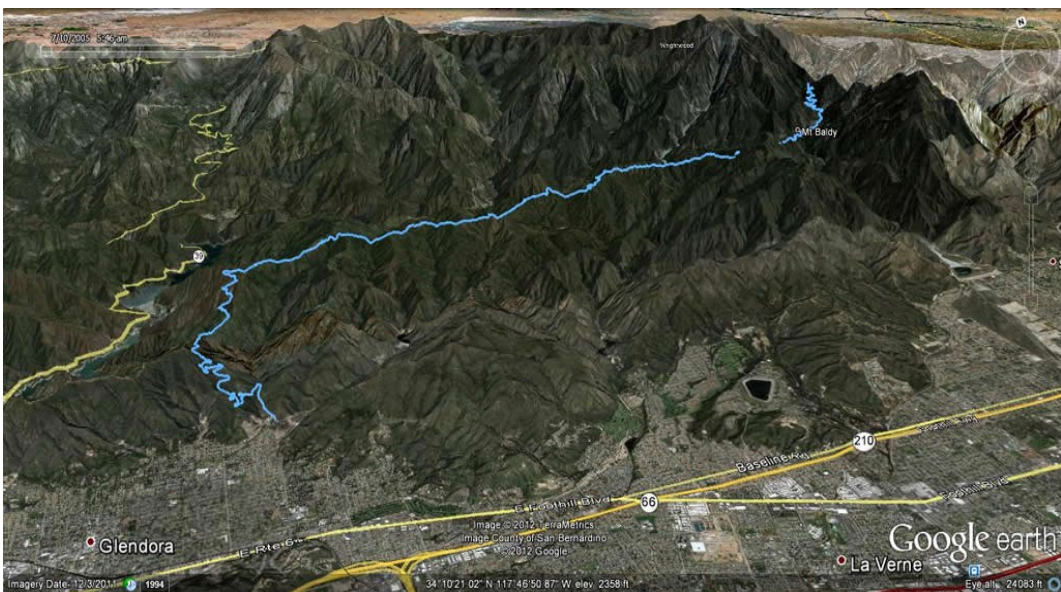
Km5



Km6 After the hairpins



Km7 Before Manker Canyon



Good visual summary in blue

L'Etape California

A mass participation bike ride is organized at Sunday, April 30, under the label « Tour de France ».



Informations on : <http://www.letapecalifornia.com/>



It belongs to a serie of 13 rides organized around the world by A.S.O.

Interested ? : <https://www.asochallenges.com/fr/events-register/cycling>

